

Christmas List
 • Mail Christmas Cards
 • Pick up wreath
 • Bake cookies
 • Gifts for the kids

*** Open IRA at Savings Bank of Manchester**

Starting today, everyone should put an IRA on a "things-to-do" list.

New 1982 tax laws let every wage earner - even those covered by a group pension plan where they work - open an Individual Retirement Account! But you don't have to wait until New Year's to set one up at the Savings Bank of Manchester. We invite you to call one of our IRA Counselors at 646-1700 to learn more.



Savings Bank of Manchester
 Manchester: Main Street, Main Office; Parnell Place, Drive In; Burn Cotton Shopping Center, East Center Street; Manchester Parkade, Hartford Road at McKee; Sports Plaza at Spencer; Top Notch Shopping Center at North End, East Hartford; Burnside Avenue, Putnam Bridge Plaza; Bolton-Bolton North at Route 44A; Anderson; Andover Shopping Plaza; South Windsor; Sullivan Avenue Shopping Center.
 Ashford: Junction Route 44 & 44A, Telephone 646-1700.
 The Express Bank
 Eastford: Monday & Friday, 198 new to post office, Tel. 974-8633.
 Scotland: Tuesday & Wednesday, across from post office, Tel. 423-0523.
 Sprague: Thursday & Saturday, 183C Main St., Tel. 822-6199, Member F.D.I.C.

The best pre-New Year's Resolution you'll ever make.

During December, you can set up your plan, do all the paperwork - and avoid the New Year's rush! This way you'll be ready to put your plan into action - and start getting the benefits - the minute the New Year begins.

Why save with an IRA? Because you save in two important ways: 1) the annual contributions are tax-exempt and 2) the annual contributions and interest earned are tax-deferred until distribution (at which time you should be in a much lower tax bracket). This combination of tax-exempt compounded savings and yearly contributions will add up to an amazingly high return over the years. For example, if you begin an IRA at age 30 and deposit \$1,000 yearly, based on an annual average daily compound interest rate of 12%, you will have accumulated, tax free, \$1,065,030.90 at age 70! (Keep in mind that this is only a projection, not guaranteed, as the actual interest rates paid throughout the life of your plan may vary considerably.)

Who is eligible for an IRA in 1982? Anyone with earned income under the age of 70, whether they're included in any type of pension plan at work or not, and even if they're self-employed. That means a babysitter, computer programmer, dentist, mechanic, or president of a multi-million dollar corporation, any wage earner, is eligible.

How much can be contributed to an IRA each year? Beginning in January 1982, any wage earner can voluntarily contribute up to \$2,000 each year or 100 percent of compensation, whichever is less. Any amount less than the \$2,000 limit is, of course, always acceptable. But we urge you to systematically save the maximum whenever possible to receive the optimum benefits.

How does an IRA work for married couples? It depends on whether both husband and wife work. If both are salaried and they file a joint tax return, they can each open their own IRA - with a maximum of \$2,000 deposited yearly in each account - for a total limit of \$4,000 which is tax deductible every year! In the event that one partner's non-working, a spousal IRA can be set up in which contributions can be made up to \$2,250 yearly.

How can an IRA be set up? Many savings plans exist as vehicles for your retirement plan, such as the new 18 Month CD designed exclusively for retirement plan savers. We at SBM can help you find the plan that's best suited to your needs. You can make deposits daily, weekly, directly as a payroll deduction, in a lump sum, whatever is convenient for you.

However, we do advise a carefully planned, systematic program of savings. IRAs should be a yearly commitment to reap the maximum rewards at retirement. Talk to one of our IRA Counselors for more facts. And remember, do it today, so your IRA can begin working for you as soon as the New Year begins.

I'd like more information about IRAs.

Name

Address

City State Zip

Telephone Date of Birth

Social Security Number

Mail to: Savings Bank of Manchester
 923 Main St., Manchester, CT 06040

F.D.I.C. regulations require a substantial penalty for early withdrawals before age 59.

Clearing tonight;
 cloudy Thursday
 - See page 2

Manchester Herald

Manchester, Conn.
 Wed., Dec. 16, 1981
 25 Cents

Soviet planes in Poland

By United Press International

Soviet transport planes landed in Poland today and Polish army tanks pushed into the Solidarity stronghold of Gdansk to root out defiant union strikers, reports from Warsaw said. The military government said union leader Lech Walesa was broken and weeping.

In a report coming out of Poland, diplomatic sources said the Warsaw pact commander, Soviet Marshal Viktor Kulikov, had been in Warsaw since Friday but this had not been officially confirmed. The arrival of the Soviet aircraft - reported in a BBC broadcast from Moscow quoting diplomatic sources - came a day after a Soviet official said the Kremlin was ready to send troops to Poland to help restore order. It was unclear, however, whether the Soviet planes carried soldiers.

Tuesday, President Reagan sent a stern message to Poland's Communist Party leadership, warning that the use of force against Polish citizens would have "extremely grave consequences." He did not spell out what such consequences would be.

Reagan also reiterated that Poland should solve its problems by itself - the diplomatic phrasing for the Russians to stay out. Reports from workers in Warsaw said Polish soldiers firing tear gas in the air had broken three of the biggest strikes by diehard Solidarity workers - two in Warsaw and one at Gdansk, where the independent union movement was born 16 months ago.

There were conflicting reports on

Related stories
 on Page 5.

the number of arrests since the military government imposed martial law Sunday and began rounding up leaders of the 9.5-million-member labor group. British Broadcasting Corp., reporting "a mood of intense anxiety" in Warsaw, said 5,000 union leaders had been arrested. A pamphlet passed out by a regrouped Solidarity group in Gdansk said 49,000 people had been arrested across the nation, but other sources said only 6,000 had been taken into custody. Poland's new military rulers moved massive troop contingents during the night in possible preparation for harsher action against defiant Solidarity activists still on strike in the fourth day of emergency rule.

The military-controlled mass media described the country as calm but admitted "it was depressing to learn that there already has been a necessity of repressive regulations of martial law."

There was no further explanation, but the military decrees prescribe a maximum sentence of death for Poles breaking the military regime's ban on strikes. The American embassy reported there were a "relatively small number of American tourists caught in Poland, but all were well and many were planning to leave by a train whose international service was running.



Emergency responses

Gas company workers repaired a leak on Dartmouth Road near Martin School (above) Tuesday afternoon. Students were kept inside the school during their lunch hour while Connecticut Natural Gas workers searched for a broken main and made the necessary repairs. The work was completed before students were dismissed for the day and it caused no major problems. A CNG spokeswoman said. The Eighth Utilities District Fire Department (right) fought a fire at W.G. Glenney Co., 336 North Main St. Tuesday night. The blaze, which was described as suspicious in origin, began at 9:15 p.m. and was brought under control in about 30 minutes. The building, a lumber warehouse, was destroyed by the fire. See page 10.



Herald photo by French

3 win Bingo

Two Manchester people and a Bolton resident will share the Manchester Herald's \$100 in Bingo Bucks prize as winners of this week's Newspaper Bingo contest. The winners are Mrs. Alice Gorman of 56 Maple St. and Fred Towle, 299 Spring St., both of Manchester, and Henry Berg of Bolton. The current card color is orange. The one for the week of Dec. 23-29 will be purple; that will be the final week of the contest. The list of stores where cards can be picked up is included on the classified page along with the contest rules.

Income tax called unlikely

Area state legislators differ on a bill sent to the House of Representatives Tuesday by the Finance, Revenue and Bonding Committee that would establish a state income tax. But even proponents of an income tax admit there is virtually no chance it will be passed during the Special Session, called to resolve the state's \$63-million budget deficit. State Rep. Walter H. Joyner, R-Manchester, said he is dead set against an income tax. "I sent out 500 questionnaires in my district," he said. "One of the questions I asked was 'would you be receptive to a state income tax to maintain state services?' The questionnaires are coming back 4-1 now. If that represents the voters in my district, then that's the position

I'm going to take." Joyner, who said he doubts the tax will pass either during this session or in coming sessions, said people oppose the tax because they fear that once it is established, it will continue to rise. "The sales tax was going to be a temporary thing, just after World War II to pay the veterans bonuses," he said. "It was just 1 percent. Now, we have the highest sales tax in the nation." Joyner said the goal should be to cut state spending, not increase revenue. State Sen. Carl A. Zinsner, R-Manchester, agreed. "The latest figures that I saw said an income tax would raise \$60 million," he said. "I'm sure if this was the case, the state would probably spend \$950 million."

He said he's wary of claims that other taxes would be reduced if a state income tax was instituted. For example, Zinsner said the New Jersey legislature promised to reduce that state's 6 percent sales tax if an income tax was passed. The income tax was passed and the sales tax dropped to 2 percent. But Zinsner said it's back up to 6 percent now. "The game plan of the Democratic members of the legislature seems to be to put in pace many onerous taxes on small groups of people - things like oil tax and the unincorporated business tax - and in doing that, you just break down their resistance to an income tax," Zinsner charged. But state Rep. Mariel Yacavone, D-East Hartford, who also

represents part of Manchester, said she thinks the concept of an income tax makes sense. "I've always supported the idea that it's a fairer tax," she said. "I think the debate will be good. I find a lot of interest in the tax among a lot of people. There are still some reservations on the part of some people, but there's support from the elderly and others who have to struggle along." But she said she thought it unlikely such a tax would pass this year. She said a graduated income tax would work well if other taxes were cut. She said she plans to propose that sales tax on clothing and food - "both basic necessities" - be eliminated entirely if an income tax is passed.

MACC begins appeal

The Manchester Area Conference of Churches hopes to help more than 250 families and individuals during the holidays in its Seasonal Sharing Appeal. One of the families has a handicapped child. Mother and father are small in stature but big in spirit. She is a thin little woman. He is working two jobs, getting up at 3 a.m. each day to make deliveries and then going in for a full day's work. Their 8-year-old daughter was born with spina bifida. Although she is in constant pain and has a drain down the side of her head, she attends school every day and is doing well. Last year, after a long struggle, the family lost a twin son to heart disease. Their medical expenses and rent have been steep. However, their 18-year-old son and 6-month-old baby girl are doing fine and they have each other. Anyone who wants to help this family and others may leave food and gifts at the Santa booth at Parkade, at Heritage Savings and Loan Association, or at any firehouse in town. Checks may be mailed Manchester Area Conference of Churches at Box 773, Manchester, Conn. 06040.

U.S. may protest Israeli Golan move

By United Press International

Israel sent tanks and planes to the occupied Golan Heights to guard against Syrian attack but Damascus fought an annexation of the region at an urgent U.N. Security Council session called today.

In Washington, Reagan administration officials said the United States would join in a Security Council condemnation of Monday's unilateral Israeli action if it was not "too shrill" or did not call for sanctions against the Jewish state.

A U.S. condemnation would be the second such action against Israel in six months. On June 19, Washington joined in a unanimous Security Council resolution condemning Israel without sanctions for its attack on Iraq's nuclear plant.

The Syrian parliament was called into emergency session to discuss the Israeli annexation legislation, denounced Monday by Damascus as a "declaration of war" that had broken the 1973 cease-fire between the two countries.

Syrian Defense Minister Mustapha Tlas threatened to use "the edge of the sword" against Israel for applying its "law, jurisdiction and administration" to the 450-square-mile strategic

plateau taken from Syria in the 1967 war. "We will confront this offensive plan and the United States will not frighten us," Tlas was quoted by the Syrian news agency Sana as telling Syrian officers Tuesday in Damascus.

Arab states have said the annexation move resulted from the recent signing of a strategic cooperation

agreement between the United States and Israel. "What they've done now, I think, clearly is a violation of the United Nations resolutions on the Middle East" and therefore the Camp David agreement, Defense Secretary Caspar Weinberger said Tuesday in a television interview.

But Israeli Foreign Minister Yitzhak Shamir told Israeli Radio,

"There is no connection between the establishment of Israeli law on the Golan Heights and the Camp David peace process."

Israeli officials contended the legislation, rammed in just six hours through the parliament by Prime Minister Menachem Begin, was not outright annexation because it stopped short of applying Israeli sovereignty to the Golan.

On the Golan Heights, Israeli armored personnel carriers and tanks on flatbed trucks rolled northward. Israeli settlers in the 31 Jewish settlements on the Golan cleaned out their bomb shelters.

Israeli Radio reported an increase in Syrian troop movements but officials and military sources said there was no evidence Damascus was planning a "strike."

Local man fights EMS plan

By Scot French
 Herald Reporter

A Manchester man is waging a fierce political battle with state planners over the design of the region's emergency communication system, and the outcome could drastically alter the way paramedics and other emergency responders communicate with hospital personnel. Bruce S. Marcus, president of Marcus Communications Inc., 134 East Center St., has challenged the state to a winner-take-all showdown to prove that his own radio system is

more cost-effective and technologically superior to the one called for in the state plan.

The stakes are unquestionably high - Marcus' plan challenges a communications system now being implemented in 16 out of 29 towns in the region, with enrollment of the remaining towns considered vital to the financial stability of the system.

Officials of the North Central Connecticut Emergency Medical Services Council, the quasi-governmental agency which devised the new communications system, have vowed to prevent Marcus from "confusing" those undecided towns

- including Manchester - with a plan they consider decidedly inferior to their own.

"They're worried about me," Marcus said recently. "and I would be too if I were them because I'm eliminating jobs and unnecessary waste."

The state-backed system went into operation July 1, with area hospitals strongly supporting it as the best way to provide "medical control" in the field. At its heart is a manned coordination center, called CMED, located at the University of Connecticut Health Center, through which all

ambulance calls are routed and all medical activity is monitored.

The center is staffed 24-hours a day by specially trained emergency medical technicians (EMTs).

MARSH'S CONCERNS that by eliminating the staffed coordination center and instituting his own automated system using direct radio-to-telephone look-ups, annual communications costs could be reduced from \$89,000 to less than \$10,000. "It's not the cost of the equipment but manpower that will cost you a

Please turn to page 4

1
6
D
E
C
1
6

Ship pact inked

HARTFORD (UPI) — The USS Nautilus, a Jules Verne legend that came true and launched America's nuclear submarine era, will be permanently berthed near the southeastern Connecticut shipyard where it was built 27 years ago.

An agreement signed Tuesday by the U.S. Navy and the state will bring the historic trail of the world's first nuclear submarine to an end near where it began in 1954 — the Electric Boat shipyard in Groton.

Shortly after its launching, the world was startled when it was announced the Nautilus had crossed the polar ice cap under water — a feat that established American underwater supremacy for more than two decades.

Li Gov. Joseph Faillio and Navy Capt. R.J. McHugh signed the agreement to retire the submarine at a memorial site and museum to be built adjacent to the U.S. Naval Submarine Base in Groton.

The Navy is providing \$1.93 million and the state \$1 million to design and build the memorial site on the Thames River.

Former Gov. John Dempsey will head a public campaign to raise an additional \$3 million in public, business and industry contributions.

McHugh said the Nautilus, now undergoing retrofitting at the Mare Island Naval Base in California, would be returned when the memorial is completed, sometime in the next 18 months to two years.

Blast damages building

DANBURY (UPI) — When officials at Danbury Hospital first heard there had been an explosion at Union Carbide's world headquarters, they braced for a wave of patients.

All available ambulances and police officers were dispatched to the sprawling complex, and emergency units across Fairfield County and in nearby Putnam County, N.Y., were put on alert.

The response turned out to be more than adequate, however, as 2,000 workers were evacuated from the complex with no injuries, and only "superficial" damage to the building, which is still under construction.

"It could have been very bad," Danbury Fire Chief Joseph Bertalovitz said of the Tuesday afternoon explosion and resulting fire. He said it was "a miracle that it wasn't worse."

The explosion between 2:30 p.m. and 3 p.m. happened in the north wing of the building at a second-floor garage. One of several propane cylinders being unloaded from a truck fell and exploded, company officials said.

The explosion ignited the other cylinders, and the resulting fire apparently spread from the garage to other parts of the complex under construction.

"There was some superficial damage to the building and some cars were damaged in the parking garage," said company spokesman Mike Herman, who said no damage estimate was available.

Mayor James E. Dyer, who went to the company headquarters as did Lt. Gov. Joseph Faillio, said the response of authorities was standard procedure in light of the number of people here.

At Danbury Hospital, spokeswoman Rodgers DePue said officials were ready for a wave of patients.



THE NICK-OF-TIME SALE

In time for all your Christmas shopping

WONDERFUL GIFT SAVINGS

FREE GIFT WRAPPING

<p>save \$6</p> <p>19.99</p> <p>le grange dressy shirts</p> <p>Reg. \$26! Pretty poly holiday stripes in sky blue or rose. A marvelously detailed blouse to top her holiday skirts and slacks. 2 breast pockets. Convertible sleeves. sportswear.</p>	<p>save up to \$10!</p> <p>4.99</p> <p>famous golden jewelry</p> <p>Values to \$15. Glimmering bracelets - bangles, chains, earrings - pierced and clip; necklaces - chain, fashion styles, pendants, bibs, chokers. jewelry.</p>	<p>save \$5.</p> <p>19.99</p> <p>junior dress pants</p> <p>Reg. \$25! From Carol Ames of California! Poly/cotton French canvas pants with pockets, belt, pleats. New 14" and 18" leg widths. Red, blue, brown, grey, cranberry. Sizes 5-13, the junior place.</p>	<p>save \$3!</p> <p>16.99</p> <p>give her a cozy warm night gown</p> <p>Reg. \$20! Softest brushed nylon sleep gowns, long lengths. Pretty lace and embroidery trims. Feminine pastels. Sizes P, S, M, L, lingerie.</p>
<p>save \$7.</p> <p>17.99</p> <p>jr. henley style fair isles</p> <p>Reg. \$25! Classic button front henleys in a fine wool/acrylic blend that machine washes and dries. 6 great giftable colors, brights and heathers. Sizes S-M-L, the junior place.</p>	<p>save plenty!</p> <p>20% off</p> <p>tomboy jr. holiday collection</p> <p>Beautiful holiday coordinates! Knickers! Vests! Skirts! Pants! Blazers! Blouses! Woolblend tweeds! Plush velveteens! Sizes 5-13, the junior place!</p>	<p>save \$2!</p> <p>10.99</p> <p>girls' shetland sweaters</p> <p>Reg. \$13! Give her the cozy warmth of our acrylic crewneck sweaters, shetland style. Many colors. Sizes 7-14, Sizes 4-8X, reg. \$12, 9.99, girls' shoda.</p>	<p>save \$17!</p> <p>18.99</p> <p>long flowery floats</p> <p>Values to \$36! Carefree polyesters that'll stay fresh wash after wash. Convenient zip fronts. Convertible mandarin, roundneck or tie styles. Sizes S-M-L, lingerie.</p>

Downtown Manchester Open Every Night til 9 - Sat. til 5

Everything for Christmas

downtown main street, USA
manchester.

Great Gift Ideas



•Have light exactly where you need it
•Spring balanced
•Ideal for desk, drawing board, sewing machine, work bench, etc.
•Assorted colors

Reg. \$21.95 Special **\$15.95**

Mini Desk Base Lamp Reg. \$24.95 Sale **\$17.95**

Pen Sets by Parker — Sheaffer — Cross — Anson — Papermate — Calculators by Sharp — for home and office

Hs Harrison's Stationers
849 Main St., Manchester

Leaf Stem & Root

(A CHRISTMAS STORE)

For All Your Gift Ideas

STORE SPECIALS

Glass Floral Arrangers \$8.99
Festive Holiday Centerpieces with Candle \$8.99
Leaf, Stem & Root designing for you

A FULL SERVICE FLORIST 649-2522
857 Main St., Downtown Manchester, Ct.

can't find it?
fairway has it!!

we are stocking up daily for your last minute needs!

• icicles • candy canes • wrapping • stocking stuffers

open every night (except sat.) till 9

fairway

the spirit of main street
downtown manchester

Unique Kitchen & Bath

646-9696

For Gift Giving, See Us!

CHRISTMAS SPECIAL!

Select Group **PLACE MATS 1/2 Price**

•Lazy Susans •Cheese Boards
•Canister Sets

•For the men in the family: APRONS & CHEF'S HATS

UNIQUE KITCHEN & BATH
38 OAK STREET MANCHESTER
Open Nites til 8, Sat. til 5

Free Gift Wrapping!

Lay-Away always available.



ARE YOUR PETS SET?

As the holiday season draws near, we have just what your pet ordered.

Custom Pet Christmas Stockings Made To Order.

AQUARIUMS

Starting at 5 1/2 gal. Also hoods, rocks, stands, plants and everything else for a super set-up.

Toddy Bear Hamsters • Fancy Hamsters
Mice • Gerbils • Guinea Pigs • Bunnies
Parakeets • Quakers • Cockatiels • Finches
We have nice young babies!

10 Gal. Starter Kits \$6.99
Healthy Tropical & Gold Fish
We Always Have Fish Specials

Brass Beds In Stock
Fashionable Outerwear For Your Dog
Shop Us For Quality & Service For Your Pets
Full Line Of Animals & Supplies

The only place your pet would want you to shop

Holiday Hours Dec. 10 to Dec. 24
Mon-Fri. 9 to 9 Sat. 9 to 5 Sun. 11 to 5

ARTHUR 50% OFF

COMPLETE EYEGLASSES

exception of cataract, trifocal & blended-bifocal lenses.

Sale Ends, Saturday, Jan. 2nd

Hartford 199 Farmington Ave. 728-5882
Manchester 942 Main St. 646-3781
Windsor 144 Broad St. 683-0541

Search No Longer
Unique Stocking Stuffers
and Hostess Gifts

Gift the Latch

GIFT SHOP
977 Main St.
Open Sun. 12 to 5
till Christmas
Mon-Sat. til 5:30 Thur til 9

PULSAR QUARTZ



It doesn't cost a lot to give a lot with Pulsar Quartz.

Great design. A range of features and functions. Near perfect quartz accuracy. A gift of Pulsar Quartz gives all this. And more. Because Pulsar makes a big impression for a very modest price. Ask to see the entire collection from slender dress to rugged sports models to multi-function digitals and even our dual display watch Dimension II. There's a Pulsar Quartz for everyone you know.

Pulsar Quartz. Always a beat beyond. In technology. In value.

SHOOR Jewelers
917 MAIN ST., DOWNTOWN MANCHESTER

Open Mon.-Fri. til 9 Sat. 9-5:30

HOLIDAY SUPER SAVERS

1981

GLENWOOD ELECTRIC OR GAS RANGE NOW ONLY \$228

SANYO MICROWAVE NOW ONLY \$198

SONY TRINITRON COLOR 12" SCREEN \$388

ATARI NOW ONLY \$139

SAMPO 12" B&W TV NOW ONLY \$68

FREE For The "Kids" GIANT CHRISTMAS STOCKING WITH ANY PURCHASE MADE DURING THIS SALE!

We Pay Less
GENTLE BUDGET TERMS AVAILABLE
Ask about our \$1,000 Instant Credit Plan

"Service Is Our Best Product"
YOUR LOCAL KEY CO-OP STORE

649 Main Street, Downtown Manchester

B.D. PEARL & SON

1
6
D
E
C
1
6

Obituaries

Sam P. Johns
EAST HARTFORD - Sam P. Johns, 81, of 21 Kenneth Drive, died Tuesday at Manchester Memorial Hospital. He was the husband of Helen (Ladkany) Johns.

Victor V. Aufero
Victor V. Aufero, 59, of 50 Duval Road, died Monday at Hartford Hospital. He was the husband of Noreen C. (Carros) Aufero.

Herman A. Moses
VERNON - Herman A. Moses, 90, of 43 Tunnel Road, died Tuesday at Rockyville General Hospital. Funeral services were held today at Ellington Jewish Cemetery.

Julia V. Zalenski
VERNON - Julia V. Zalenski, 63 of 103 Franklin Park West, died Tuesday at Manchester Memorial Hospital.

George E. Brown
EAST HARTFORD - George Edwin Brown, 67, of 811 Oak St., died Tuesday at Hartford Hospital. He was the husband of Gloria (Ogden) Brown.

Marie R. Molloy
EAST HARTFORD - Marie (Rousseau) Molloy, 61, of 43 Ensign St., died Monday at St. Francis Hospital and Medical Center.

Open Forum
The Manchester Herald's Open Forum provides space for reader dialogue on current events. Address letters to the Open Forum, Manchester Herald, Herald Square, Manchester, CT 06040.

Personal advice
Abigail Van Buren offers personal advice daily in one of America's best-read columns, "Dear Abby," in The Manchester Herald's Focus section.

Weekend events
The Herald provides a comprehensive calendar of "where to go and what to do" every Friday in the Focus/Weekend section.

A.M. storm causes woes

Slippery conditions caused by the second storm to hit the area in 24 hours closed schools and caused a number of minor traffic accidents this morning.
Manchester residents sloshed through a combination of precipitation that started out in the predawn hours as rain and changed to snow about 6 a.m.

Jack Shea, the state highway department coordinator, said conditions on area highways were "pretty good" by mid-morning.
Shea said the state started sanding the highways about 4 a.m. in the Hartford area and called out contractors to aid their efforts about 7 a.m. to prepare for the morning rush hour.

Police were backed up for an hour this morning responding to accidents, Minor reported.
State police said there were very few accidents on state highways in the area. Most problems were caused by cars sliding off the roads, they said.

Burglars ransacked a bedroom and stole a dresser, desk, nightstand, jewelry box, two cameras and a calculator in a break-in Monday morning at a Prospect Street apartment.

George E. Brown
EAST HARTFORD - George Edwin Brown, 67, of 811 Oak St., died Tuesday at Hartford Hospital. He was the husband of Gloria (Ogden) Brown.

Funeral services will be Thursday at 11 a.m. from Newkirk and Whitney Funeral Home, 318 Burnside Avenue. Calling hours are today from 2 to 4 and 7 to 9 p.m. Memorial contributions to the American Heart Association.

Open Forum
The Manchester Herald's Open Forum provides space for reader dialogue on current events. Address letters to the Open Forum, Manchester Herald, Herald Square, Manchester, CT 06040.

Personal advice
Abigail Van Buren offers personal advice daily in one of America's best-read columns, "Dear Abby," in The Manchester Herald's Focus section.

Weekend events
The Herald provides a comprehensive calendar of "where to go and what to do" every Friday in the Focus/Weekend section.

Announcing AL SIEFFERT'S MICROWAVE FAIR SATURDAY DEC. 19, 11 to 4 EVERY FAMOUS BRAND ON SALE! YOU'LL MEET THE PROS FROM G.E., AMANA, LITTON, TOSHIBA, JENN-AIR, QUASARI. YOU'LL SEE THE LARGEST DISPLAY OF MICROWAVE OVENS IN HARTFORD COUNTY IN ACTION!

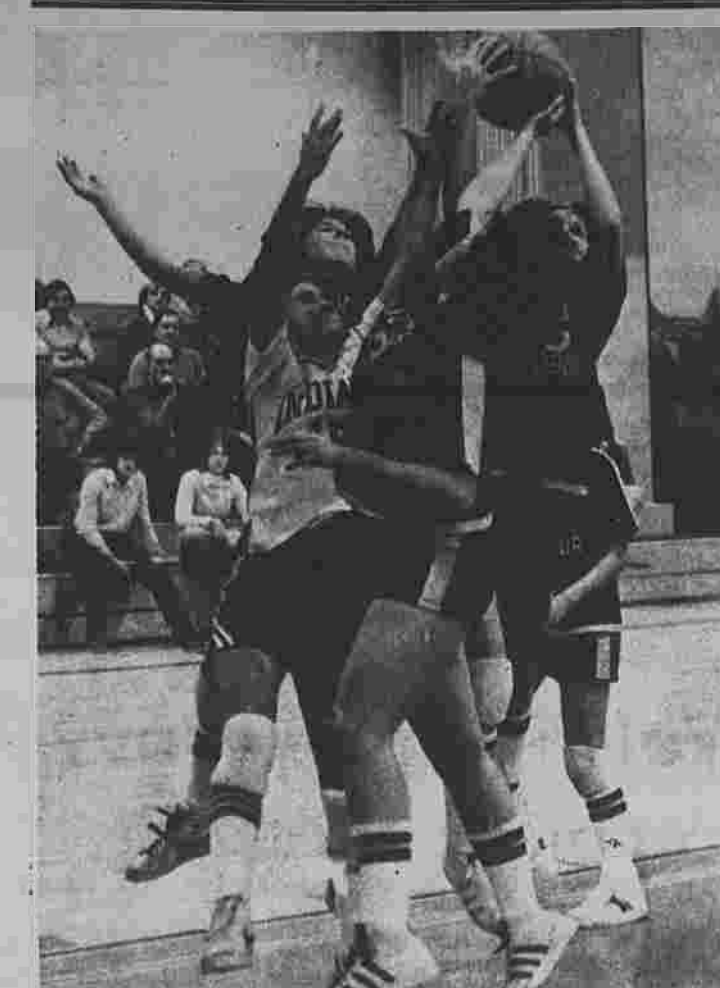
Table with microwave models and prices: TOSHIBA 1.5 cu. ft. variable power \$299, LARGE MICRO BROWNER \$249, AMANA RST TOUCHMATIC \$447, TOSHIBA MICROWAVE OVEN \$229, LITTON MULTI-POWER FAMILY SIZE \$267, LITTON SPACE SAVER \$597, Less \$50 Rebate \$547.

OPEN SUNDAYS FROM 12:00 to 4:00
On Price DID YOU KNOW THAT AL SIEFFERTS IS THE PROFESSIONAL MICROWAVE SELLERS? Microwaves are a big investment... and you deserve the best price... and you can match or beat any price.

The Selection
Which unit is the right one for you... and why. See the six top companies in action, yes, with a live demonstration anytime.

Al Siefert's
Pick Up Your FREE "BINGO" CARD When You Shop Here!
TONITE TELL S MON THURS TUE WED SAT FRI SUN
FREE LOCAL DELIVERY FREE SERVICE FREE NORMAL INSTALLATION FREE REMOVAL OF OLD APPLIANCE

SPORTS



Manchester High's Shana Hopperstead (15) is surrounded by South Windsor cagers in rebound battle. Among Bobcats battling for ball are Robyn Mackey (with both hands on it) and Barb Tersavich (43) in foreground. Bobcats took defensive struggle.

SW girls on top, 45-38 to spoil Indian opener

Manchester had a 14-13 lead after one turn by managed only two points in the second canto on 1-for-9 shooting with 7 turnovers and 11 rebounds. Linda Pavone 10 points and 8 carsons and Barb Tersavich 9 points and 8 rebounds to lead the Bobcats, who went with an iron-man five except for a brief substitution to start the fourth quarter.

Mancheater almost sliced the Bobcat lead to six points with three minutes left but a Jackie Tucker layup spun in-and-out. South Windsor, which had a 32-27 edge in the

rebounding department, then reeled off three unanswered points for a double digit edge.
Mackey had 17 points and 11 rebounds, Linda Pavone 10 points and 8 carsons and Barb Tersavich 9 points and 8 rebounds to lead the Bobcats, who went with an iron-man five except for a brief substitution to start the fourth quarter.

Partially hidden Robyn Mackey of South Windsor gets shot off despite defensive effort of Manchester High's Karen Wright (23) in girls' hoop action at Iling.

Officials take away momentum

"Officials can take away the momentum," Dom Perno, UConn varsity basketball coach said, "and we are a physical team and we do foul."
These remarks came during the luncheon to stimulate interest in the fourth annual Connecticut Mutual Classic Dec. 29-30 at the Hartford Civic Center.

Herald Angle
Earl Yost, Sports Editor
with officials," Perno continued. Like in other sports, basketball officials are supposed to start out perfect and improve.

Special interest

Dom Perno has a special interest in East Catholic High's basketball team this season. His son, Dom, is a member of the Eagle squad. One in every 5,000 college golfers has the ability to make it on the PGA tour according to Alabama coach Conrad Rehling. Five of his ex-players made the grade. Jerry Pate, Bob Murphy, Frank Beard, Doug Sanders and Dan Sikes. Deb Lawler has lettered in volleyball at Kingswood-Oxford School. Date of the Super Bowl is Sunday, Jan. 24 starting at 8 o'clock.

Officials can take away the momentum... Special interest... Veteran player extended in net match

New kind of sensation experienced by Lloyd

East Rutherford, N.J. (UPI) - For all she has experienced in tennis, this was a new kind of sensation for Chris Evert Lloyd.
Already down a set to Pam Shriver, she raced off to a 5-1 lead in the second set and had nine set points over a stretch of three games. On each occasion, though, Shriver fought back and eventually forced a tiebreaker. This time Evert managed to jump ahead and stay there, and then went on for a shaky 3-7, 6-3 victory Tuesday night in the opening round of a \$25,000 women's tennis tournament.

Baseball trade
CINCINNATI (UPI) - The Cincinnati Reds Thursday obtained the contract of outfielder Gil Culski in exchange for that of first baseman Larry Wolke in a trade of AAA players with the Milwaukee Brewers.

Player-of-Week
PITTSBURGH (UPI) - Mark Jones of St. Bonaventure, a 6-foot-2 junior, has been named Eastern Eight Player of the Week for his play in games against Syracuse and Wheeling (W.Va.), the league announced Tuesday.

Baseball trade
CINCINNATI (UPI) - The Cincinnati Reds Thursday obtained the contract of outfielder Gil Culski in exchange for that of first baseman Larry Wolke in a trade of AAA players with the Milwaukee Brewers.

Player-of-Week
PITTSBURGH (UPI) - Mark Jones of St. Bonaventure, a 6-foot-2 junior, has been named Eastern Eight Player of the Week for his play in games against Syracuse and Wheeling (W.Va.), the league announced Tuesday.



Tracy Austin reaches out to backhand shot in first set against Virginia Ruzici in first round of Women's Tennis Championship in New Jersey yesterday. Austin went on to triumph in straight sets, 6-1, 6-1, 6-1 in 6-1 minutes, and Jaeger needed only 49 minutes to dispose of Hana Mandlikova, 6-4, 6-1, winning eight of the last nine games and Evert Lloyd.



Pam Shriver grimaces after missing point in losing effort against Chris Evert Lloyd during first round of Women's Tennis Championship yesterday. Scores were 3-6, 7-6, 6-3.

Tracy Austin reaches out to backhand shot in first set against Virginia Ruzici in first round of Women's Tennis Championship in New Jersey yesterday. Austin went on to triumph in straight sets, 6-1, 6-1, 6-1 in 6-1 minutes, and Jaeger needed only 49 minutes to dispose of Hana Mandlikova, 6-4, 6-1, winning eight of the last nine games and Evert Lloyd.

16 DEC 16

Scoreboard

Basketball
NATIONAL BASKETBALL ASSOC.
Eastern Conference
Western Conference

Hockey
NATIONAL HOCKEY LEAGUE
By United Press International
W L T Pts GP GA

Football
NATIONAL FOOTBALL LEAGUE
By United Press International
W L T Pts GP GA

Baseball
PacifiC Division
Eastern Division

Baseball
PacifiC Division
Eastern Division

Baseball
PacifiC Division
Eastern Division

Baseball
PacifiC Division
Eastern Division

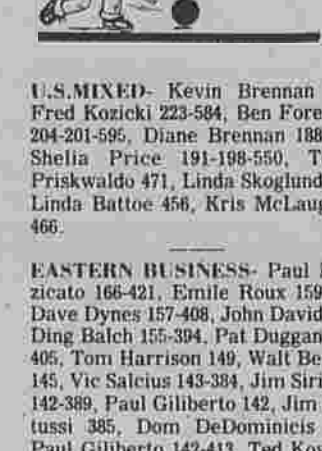
Baseball
PacifiC Division
Eastern Division

Baseball
PacifiC Division
Eastern Division

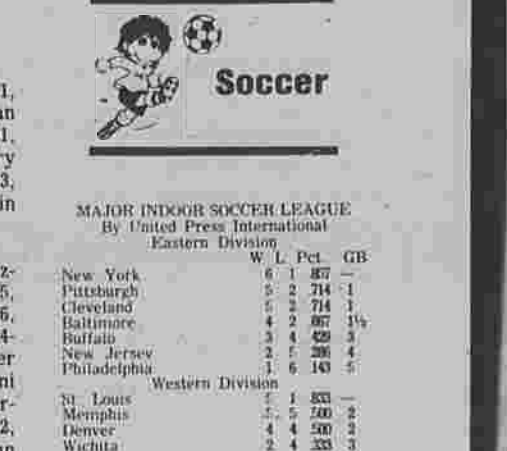
Baseball
PacifiC Division
Eastern Division



WHO AM I?
It's a long, hard road to the Hall of Fame...



Bowling
U.S. MIXED - Kevin Brennan 211, Fred Koski 223-338...



Soccer
MAJOR INDOOR SOCCER LEAGUE
By United Press International

Eastern Business - Paul Moxziczko 166-421, Eric Runtz 159-235...

Country Club - Ted Backler 147-145-421, Charlie Whelan 142-153-418...

AARP - Pearl Burnham 178, Rose Lumbruno 183, Edna Christensen 183-481...

Zodiac - Marilyn Ferguson 179, Carol Powell 454, Marian Eaton 176-497...

Elks - Ernie Pepin 361, Bill Wirt 142-386, Bill Hanson 149-389...

FOCUS / Food



For Julia Hayes, color and composition are important. A bed of leaf lettuce serves as a foil for red onion, grapefruit, tomatoes, and rounds of fresh kiwi fruit.

Local experts offer appetizing suggestions
Holiday tips for harassed hostesses

By Susan Plese Herald Reporter
Combine all ingredients, and add a little cream (sweet or sour) if a softer texture is desired.
JULIA HAYES of Coventry, author of 'French Cooking for People Who Can't...'

WINTER SAVINGS AT Lynch
1980 Datsun Pickup \$5995
1980 Oldsmobile Delta 89 Royale \$5295
1980 Oldsmobile Delta 89 Royale \$5295
1980 Oldsmobile Delta 89 Royale \$5295

NO STOCKER SHOCK HERE!
BRAND NEW 1981 ESCORT GL. 3-DR. HATCHBACK
SALE PRICE \$6695
OTHER SPECIALLY PRICED BRAND NEW 1981'S

BILLION Ford
The One-Stop Service Shop!
319 Main Street (Across from Anthony)
MANCHESTER, CT 06040-2945

Try orange cheese pancake for Hanukkah

The Festival of Lights was born over 2,000 years ago when the Maccabees, under the leadership of Judah, drove their enemies from the Temple and purified the sanctuary with one small cruse of oil which burned miraculously for eight days.

Since that time ago, the eight days of Hanukkah is a time to share feasting, games and laughter with loved ones.

As well as the formal banquet that takes days to prepare, the modern hostess will have at her fingertips a few choice recipes to accommodate unexpected guests and make a special brunch or late evening supper with holiday appeal.

Hanukkah Orange Cheese Pancake is a satisfying, nourishing dish that takes just a few minutes to prepare. The pancake is partially cooked in the skillet, topped with cottage cheese and fresh Florida orange sections, and placed in the oven for final baking. Deliciously light and puffy, it has a delightful flavor that all ages will enjoy.

Hanukkah Orange Cheese Strudel is a new version of the ever-popular cake. Succulent fresh orange sections lend a pleasing contrast in taste and texture to the crisp dough and cottage cheese mixture. The strudel can be made ahead, assembled and refrigerated until needed, then baked in the oven for just 30 minutes, making it a particularly convenient treat for the holidays.

Hanukkah Orange Cheesecake

1 cup flour
1 teaspoon baking powder
1/4 cup butter
1/2 teaspoon salt
4 eggs
1 1/2 cup heavy cream
2 small Florida oranges peeled and sectioned (1 cup)
1/2 cup brown sugar
1/2 cup cottage cheese

In medium bowl combine flour, baking powder, orange peel and salt. Beat eggs about 2 minutes until light and frothy. Stir eggs and cream into dry ingredients. Do not overbeat; mixture should be slightly lumpy. In a 10-inch skillet with an oven proof handle, melt butter. When butter sizzles, pour in batter. Cook over medium heat about 2 minutes until batter begins to set.

Combine cottage cheese and orange sections, spoon over partially cooked batter. Place skillet in a 400 F degree oven 10 minutes. Sprinkle top with brown sugar, place under heated broiler 7 minutes or until sugar is melted and pancake is set. Remove from oven and allow to cool in pan about 5 minutes. To serve, cut into wedges.

YIELD: 4 to 6 servings.

Hanukkah Orange Cheese Strudel

2 Florida oranges, peeled and sectioned (1 1/2 cups)
2 cups cottage cheese, well-drained
1/2 cup butter
1/4 cup sugar
1 cup packaged dry bread crumbs, divided
2 egg yolks, beaten
2 tablespoons flour

Preheat oven to 350 F.
In a small bowl combine 1/2 cup butter, 1/4 cup sugar, 2 cups cottage cheese, 1/2 cup flour, 2 egg yolks, and 1/2 cup bread crumbs. Mix well.
Roll out pastry sheet in a rectangle 7 x 15 inches. Sprinkle each sheet with 2 tablespoons bread crumbs and 1/2 cup of the butter mixture.

London Broil Steaks

1 1/2 lbs.
1.99

Grade "A" Turkeys

10 lbs. to Under 22 lbs.
55¢ lb.

Self-Basting Turkeys

10 lbs. to Under 22 lbs.
69¢ lb.

Smoked Hams

Shank Portion
99¢ lb.

Meat Specials

London Broil Steaks
BEEF CHUCK - BONELESS SHOULDER
1 1/2 LBS.
1.99

Grade "A" Turkeys
U.S.D.A. INSPECTED - FROZEN - BASTED
10 LBS. TO UNDER 22 LBS.
55¢ lb.

Self-Basting Turkeys
FROZEN - A&P - 100% PURE BUTTER BASTED
With Pop-Up Timer
10 LBS. to Under 22 LBS.
69¢ lb.

Smoked Hams
FULLY COOKED - WATER ADDED
Shank Portion
99¢ lb.

Latex Gloves

Hand Crafted - 25 AMBERGLOVES - 2500 P.P.P. OR
Hand Crafted - 25 AMBERGLOVES - 2500 P.P.P. OR
Hand Crafted - 25 AMBERGLOVES - 2500 P.P.P. OR

Christmas Wraps

Hand Crafted - 25 AMBERGLOVES - 2500 P.P.P. OR

Transparent Tape

Hand Crafted - 25 AMBERGLOVES - 2500 P.P.P. OR

Bag-O-Bows

Hand Crafted - 25 AMBERGLOVES - 2500 P.P.P. OR

Charmin Tissue

4 400-ct.
1.09

Chanukah Candles

1/2 doz.
29¢

Tato Mix

1/2 doz.
49¢

Potato Pancake

1/2 doz.
1.09

Sweetouchnee

1/2 doz.
1.09

Pepsi-Cola

Plus Deposit in Cl.
2-ltr. Btl.
1.09

Guaranteed
DRAPERY CLEANING
• No Shrinkage
• Squared & Even Hemlines
• Take-down & Re-Hang Service

Swiss
DRAPERY SERVICES
"CHOOSE SWISS QUALITY WITH CONFIDENCE"

Call: 872-0166

Beard on food

Chapman's hasty recipes show imagination

By James Beard

So much has been written lately about quick meals, dinner in half an hour and food on the run that one begins to wonder just how much time people want to spend in their kitchens.

There are times, of course, when one simply must prepare a hasty meal in order to accommodate some other activity. Very often, too, when people live alone, or the household consists of just two people, the mere thought of preparing an imaginative meal seems like a chore.

However, I have seen fit to find fault with many of the menus that are offered to those hurried cooks, to the point where I was getting quite testy about the whole subject. Then along came this charming book, "Fifteen Minute Meals," by Emalee Chapman.

EMALEE has long been a pillar of the food world in San Francisco. She has taught cooking classes, worked in one of two of the big food shops and also done "food styling," which is a terrible phrase used to describe the art of making food look beautiful in photographs. She's a woman of great taste, has traveled extensively and knows food. Her book is not all what one might expect.

It's a collection of 15-minute main courses that will form the basis of some perfectly delightful dinners. The addition of some salad, a glass of wine and maybe a crusty loaf of bread is all that's needed for a complete, sophisticated and filling repast.

Many of the recipes Emalee gives are tried-and-true dishes from Emalee's own kitchen; others stem from her travels. The recipes are not forced to fit into a rigid format, and she displays a very intelligent approach to dining with style, but with little fuss involved in the preparation.

Emalee approaches basic ingredients with confidence and expertise. Her egg dishes show great imagination, and there are a wealth of seafood and fish recipes as well as vegetable dishes that are hearty enough for a main course.

The chicken dishes are particularly splendid. For instance, when she poaches chicken with arragon, she does it in the most original way. She cuts the chicken into strips and dips the pieces into hot broth. This cooks the chicken not only quickly, in the time that she says, but results in a wonderfully fresh-tasting dish. I found the quick marinades for turkey, chicken and squid to be most interesting, and her vegetable recipes so especially the one for scallops with fresh orange juice.

WITH this book in hand, one could make delightful meals for a year with a few variations on the basic ideas. It's an intriguing little volume, with pleasant drawings that suit the text very well. If you appreciate imaginative meals made with fresh ingredients, and particularly if you habitually cook for one or two people, Emalee's book ought to be in your bookshelf.

One of Emalee's recipes involving eggs and asparagus makes as simple and pleasant a main dish as I can think of. It's easy, it's tasty, and it requires very little time in the kitchen.

PREPARE YOUR VALVE PACKED CIRCULAR IN THE STORE WHILE SUPPLY LASTS!

WALDBAUM'S Food Mart

ALL FOOD MART STORES OPEN SUNDAY 9 A.M. TO 5 P.M.

DOUBLE COUPONS ALL THIS WEEK AT FOOD MART!

CAINS MAYONNAISE QUART JAR **\$1.29**

GREEN GIANT VEGETABLES 12 TO 17 OZ. CANS **39¢**

Coke, Tab or Fresca 2 LITRE BOTTLE **99¢**

NEW YORK STYLE DELI Imported Genuine Swiss Cheese **\$2.29 - \$2.99**

FOOD CLUB MUSHROOMS 4 OUNCE CAN **39¢**

Lipton Tea Bags 100 COUNT PKG. **\$1.59**

FOOD CLUB FLOUR 5 LB. BAG **69¢**

HOOD'S Ice Cream ALL FLAVORS 1/2 GAL. CONTAINER **\$1.49**

MRS. SMITH'S PIES ASSORTED VARIETIES 28 OUNCE PKG. **\$1.39**

HEALTH AND BEAUTY AIDS! Crest Toothpaste 69¢, Flex Shampoo 1.69

HAPPY HOLIDAYS BEGIN AT FOOD MART!

U.S.D.A. CHOICE BEEF Boneless London Broil (SHOULDER) \$1.99 LB.

TASTY LEAN FRESH HAMS \$1.49 LB.

EMPIRE TURKEYS \$1.09 LB.

OVEN STUFFERS \$1.79 LB.

CORNISH HENS \$1.09

SHOULDER ROAST \$1.99

CHUCK ROAST \$1.99

ITALIAN SAUSAGE \$1.59

RIB EYE OF TENDERLOIN \$3.99

SMOKED HAMS \$1.19

CHUCK STEAKS \$1.29

SMOKED HALF HAMS \$1.99

SWITZ'S GRADE "A" BUTTERBALL TURKEYS 10 TO 22 LBS. AVG. \$77c LB.

FRESH PERDU WHOLE CHICKEN BREASTS 99¢ LB.

ARMOUR NORBERT & OTHER FAMOUS BRANDS GRADE "A" TURKEYS 10 TO 22 LBS. AVG. 55¢ LB.

FRESH SNO-WHITE MUSHROOMS 4 QUART BASKET \$4.99

TENDER Fresh Broccoli Large Bunch \$79c

Sweet Potatoes 2 lbs. 89¢

California Sweet Juicy Emperor GRAPES 89¢

California Fresh Celery Hearts \$1.19

Artichokes \$1.19

Scallops \$1.19

Boiling Onions 3 lbs. \$1.19

Butternut Squash 69¢

FLORIDA TANGERINES ZIPPER SKIN 91.5¢

Navel Oranges 5 for \$1.19

JUST IN TIME FOR GIFT GIVING! TIMEX CLOCKS & WATCHES BY KELTON ONLY \$9.99

WITH \$100. WORTH OF GREEN REGISTER TAPES SEE STORE FOR DETAILS

A SPECTACULAR OFFER IN TIMELESS CLASSIC BEAUTY OF SOLID GOLD! 14 KARAT GOLD CHAINS \$19.99

WITH \$100. WORTH OF GREEN REGISTER TAPES SEE STORE FOR DETAILS

CALDOR PLAZA BURR CORNERS, MANCHESTER

SNOWY BLEACH 28 OUNCE PACKAGE \$1.29

MASTER BLEND COFFEE 13 OZ. CAN \$1.89

PILLSBURY BREAD MIXES 15 OUNCE PACKAGE 99¢

DUTCH MAID NOODLES 1 POUND PACKAGE 69¢

PIZZA MAGIC SAUCE ASSORTED FLAVORS 12 OUNCE JAR 69¢

FOOD CLUB Mac & Cheese DINNER 7 1/2 OUNCE PACKAGE 5 99¢

16 DECEMBER 16

Your neighbor's kitchen

Seniors' cookbook has favorite recipes

By Adele Angle Focus Editor

Myrtle Lehmann and her husband had no sooner dropped a copy of Manchester Senior Citizens' brand new cookbook off at Neva Savino's house when the Lehmann's phone rang.

"Myrtle, you have Irish potato bread," Mrs. Lehmann recalls Mrs. Savino practically shouted into the phone.

If you are familiar with the old Davis Bakery on Main Street and its Saturday sales of Irish potato bread, you know why Mrs. Savino was so excited.

"We sold thousands of loaves of that bread every Saturday. It was the biggest seller Davis ever had," recalls Mrs. Lehmann, who worked at the bakery years ago.

THE BREAD is actually a way of using leftover mashed potatoes. It's prepared on top of the stove. The recipe comes direct from Ireland via Helena Foster, one of several dozen contributors to the cookbook, the Senior Center's first published venture.

Copies of the cookbook are on sale at the center for \$4. The first 200 copies sold out, and Mrs. Lehmann says she expects 200 more copies to arrive sometime this week.

She's confident the latest batch will disappear as quickly as the first.

The 86-page spiral bound cookbook has a full range of recipes, from appetizers to desserts. It's well organized with a table of contents in the back and blank pages for extra recipes. There are also helpful hints and measurement tables throughout.

Mrs. Lehmann says she put together the recipes with the assistance of Ann Magnan and Betty Varley. The trio solicited recipes from seniors and then reworked them before submitting them to a Kansas publishing firm.

The cookbook they've come up with is a practical mix of old favorites and imaginative new dishes. Among the many desserts in the book is Ruth Howell's Dump Cake, a dessert which is a lot more delicious than its name. It's a cinch to make, too, and those who have tried it say it's a crowd pleaser.

Yellow cake mix, nuts, cherry pie filling and crushed pineapple are all you need. Cookbook proceeds will be used to furnish the center's furnishings fund. Activities specialist Joe Dimmitt says two-way selling lanes are among the items the cookbook will buy.

Helena Foster's Irish Potato Bread

8 ounces (1 cup) mashed potatoes, 1 teaspoon salt, 1 pinch of pepper, 1 to 2 ounces butter, flour (with very little milk). Mix ingredients to make a stiff dough. Roll out to one quarter inch thick and cut into eight pieces. Cook on a hot plate, browning on both sides. Delicious when fried with bacon and eggs.

Ruth Howell's Dump Cake

1 (20-ounce) can crushed pineapple (undrained), 1 (20-ounce) can cherry pie filling, 1 package yellow cake mix, 1 1/2 sticks butter or margarine, 1 cup chopped nuts. In an ungreased 9 by 13-inch pan, spread crushed pineapple with juice to cover entire bottom of pan. On top of pineapple, add the can of cherry pie filling. Sprinkle cake mix on top of cherry layer. Thinly slice butter lengthwise, place on top of cake mix layer and top with chopped nuts. Bake in 350 oven for about 60

minutes. Let set for three hours before serving. Cut into squares and top with over and toss well. Chill for 24 hours. Keeps well.

Myrtle Lehmann's Pickled Radishes

2 cups radishes (approximately), 1 large pepper, cut in small strips, 1 medium onion, cut into rings, 3/8 cup white vinegar, 1/2 cup vegetable oil, 1/2 teaspoon salt and pepper, 1/2 cup sugar.

Harriett Alsaver's Double Chinese Meat Roll

1 1/2 lbs. lean ground beef, 1/2 cup cracker crumbs, 2 (eight ounce) cans Hunt's

tomato sauce with cheese, 2 eggs, 1 teaspoon salt, 1/2 cup finely chopped onion, 1/2 teaspoon oregano, 1/2 teaspoon pepper, 2 cups shredded Mozzarella cheese.

Combine ground beef, eggs, crumbs, onion, one-third cup Hunt's sauce with cheese, salt, oregano and pepper. Mix well and shape into a flat rectangle on waxed paper. Sprinkle cheese evenly over meat mixture. Roll up, seal, jellyroll and press to seal. Bake in 350 oven for one hour. Drain excess fat, pour remaining Hunt's sauce over roll and bake for an additional 15 minutes.



Manchester Senior Center members who put together the Center's very first cookbook are (from left) Myrtle Lehmann, Ann Magnan and Betty Varley, all of Manchester.

About Town

Center to present film

The Early Childhood Learning Center at 481 Spring St. will present the film, "It's Cool to be Smart" as well as information on giftedness in young children at 7 p.m. Thursday at the center.

Bridge club winners

The following are the results of the Dec. 7 games of the Manchester AM Bridge Club: North-South: Terry Dunlap-Mary Corkum; Barth Smyth-Flo Smyth. East-West: Alice Moe-Murray Powell, Ethel Robb-Marge Frenette. Results of the Dec. 10 Swiss Team Club championship: Frankie Brown-Phyllis Pierson; Penny Wetherwax-Peg Dunfield; first; and Mary Corkum-Ann McLaughlin; Flo Barre-Ann DeMartin; second.

Concert slated Saturday

The Manchester High School Fine Arts Department will present its annual holiday concert Thursday at 7:30 p.m. in the school auditorium. The concert will feature the school choir, band, Round Table Singers, and Stage Band. Also included will

be a flute trio, male chorus, and vocal duet by Jennifer Joy and Laurie Baker. The public is invited. Admission is free.

Drawing raises \$964

A recent drawing on a Victorian dollhouse, conducted by the Special Events Committee of the Manchester Unit of the American Cancer Society, raised \$964. The money will be used for cancer research, public education and patient service. The dollhouse, from the "Miniature Corner," was donated to the society by Connecticut Bank & Trust Co. and was displayed at the bank's Parkade branch during the month of November. It was won by Mrs. Dolores Phelps of Pascal Lane. Mrs. Phelps is a foster grandmother and volunteers at the Riverside Convalescent Hospital in East Hartford. She has also worked at Mansfield State Training School as a foster grandparent.

KofC dance set

The Knights of Columbus of Manchester Council 573 will have its annual New Year's Eve party and dance, Dec. 31 from 9 p.m. to 2 a.m. at the KofC Home, Main Street. Music will be by "The Celebrate." A roast beef buffet dinner will be served at 8 p.m. The donation will be \$20 per person and those attending should bring their own liquid refreshments. Free set-ups will be provided. For tickets and reservations call 646-7265 or the KofC Hall, 646-9044.

Grisel ordained

BOLTON — Basil Grisel, son of Mrs. Dora Grisel of West Street, Bolton, and the late William Grisel, was ordained to the holy priesthood Sunday during the divine liturgy service at All Saints Orthodox Church, 205 Scarborough St., Hartford.

Bishop Mark, Bishop of Boston, presided at the ceremony. Dinner was served in the church hall after the ceremony.

Be informed Stay on top of the news—subscribe to The Manchester Herald. For home delivery, call 647-9946 or 646-8947.

527 Burnside Ave. East Hartford 528-0283. 113 Main St. Manchester 647-0469.

HOW TO BAKE A BETTER CHRISTMAS COOKIE. With no preservatives or additives, King Arthur makes a cookie that's rich in Nature's gifts. Cream 1/2 lb of butter with 2 cups sugar. Beat in 4 eggs. Melt 4 ozs bitter chocolate, let cool slightly and add to the above. Mix 4 cups KA Flour with 1 tsp each of baking powder and salt. Add flour mixture to butter mixture in 3 equal steps, mixing thoroughly after each. Grind 1 lb of nuts (walnuts or pecans) in blender and add to dough. Roll walnut sized pieces of dough into balls and place on cookie sheet. Bake at 320° for 13 minutes. Makes 5-6 dozen wholesome Christmas cookies.

Advertisement for King Arthur Flour featuring an image of the flour bag and a recipe for Christmas cookies.

Advertisement for Mt. Vernon Dairy Stores listing various dairy products and prices: Land O Lakes Butter at 1.79, Farm Fresh Eggs at 99c, Dunkin' Donuts Orange Juice at 99c, and Native Fresh Potatoes at 99c.

VERNON HAS IT

SELECTION, QUALITY, SERVICE & PRICE OPEN NIGHTS TILL CHRISTMAS!

Advertisement for Zahner's Shoe Shop featuring a woman in a winter coat and a handbag. Promotions include 20% off women's boots and leather handbags.

Advertisement for Waterbed Christmas Gift Sale listing prices for sheets, pads, and vinyl bumpers.

Advertisement for Rizzo Ski Marts for Christmas, listing various ski equipment like jackets, pants, and boots with prices and discounts.

Advertisement for Hi-Fi Stereo House listing various audio equipment like stereos, speakers, and cassette decks with prices.

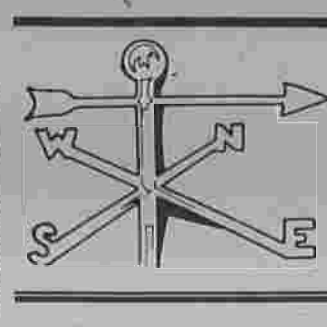
Advertisement for Noel from Quoizel, featuring a large glass globe lamp with a price of \$49.95.

Large vertical text on the right side of the page: 1 6 DEC 1 6

Study finds growth rate far below predictions

Verdict on Bolton: it's a bedroom town

By Richard Cody
Herald Reporter



Area towns Bolton / Andover Coventry

BOLTON — A sharp decline in the town's population growth over the past 10 years, a decline in the average household size, and information leaving "no doubt that Bolton is a bedroom community" are just some of the insights and results found in a recently released report to be used in completing the new town plan.

There also isn't going to be much change in the population growth over the next 10 years, or in the character of the town, the report finds.

It was submitted by Regional Planner Wilfred Maxwell and Planning Technician Stuart B. Papper, and will be presented to the Planning Commission tonight.

It marks the completion of the first phase of the project of updating the 1970 town plan, and lays a formal groundwork for the next step, a draft of the final plan.

Commission Chairman Robert E. Gorton said Tuesday the draft should be completed within three or four months, with the final draft finished shortly after.

The report is a collection of data and study results, some of which have been released like the capital improvement report and the survey of town needs.

But some new information about population growth and trends, and a study of the town's economy, also are included.

After a 130 percent town population increase

between 1950 and 1960 (1,279 to 2,833 persons), the report states that the growth rate dropped to 26 percent over the next 10 years, bringing the total to 3,691.

The decline continued to a seven percent growth rate between 1970 and 1980, a marked discrepancy from the rate projected by the 1970 plan, which expected a close repeat of the previous 10 years. This brought the total to 4,161, and the percentage increase over the last 10 years ranked second to lowest in the capital region.

Andover had the lowest increase, two percent, a total of 47 persons, reflecting these pressures.

Bolton was not alone in experiencing a sharp increase in the 1950s, then a decrease in the following years.

The suburban growth in the 1950s continued to flow outward into the countryside and growth rates in these areas began to be considered before 1980, but as we know, apartments are scarce in town, and the Hartford, which suffered loss of population during this period. Migration from other areas also contributed to expanding pop-

ulation in the inner and outer suburbs. As the original population study stated, this immigration pattern contributed to three-fourths of the inner suburban growth and some two-fifths of the increase in the outer suburbs' growth from 1950 to 1970.

"Bolton was the fastest growing town in the planning region... During the 10 years from 1950 to 1960 the town began to experience the pressures that come with growth, i.e., parks, recreation, streets and particularly the need for schools."

Bolton High School was built in the early 1960s, and pointing between them.

"However, should the present housing doldrum be reversed, high interest rates subside, land use

regulations be relaxed, birth rates increase, and 1-84 be constructed, then it is possible that the high population estimate will be reached. With an adequate policy and planning program and capital improvement schedule such increases should have minimal impact on community facilities and services," the report explains.

It goes on to say that any prediction of population rates is subject to effects by many factors. "The 1970 town plan estimate fell very short of its target and it is expected that its 1990 projection will do likewise."

In terms of economy, Bolton hasn't changed much since 1970. In 1971, the report states, industrial and commercial

uses represented four percent of the entire grand total. Residential, meanwhile, took up 78 percent. This rose to 80 percent in 1980, while industry dropped to three percent. This steadiness, the report concludes, leaves "no doubt that Bolton is a bedroom community."

"As it has always been, (even though it is slow) urban residential growth... Most people in Bolton commute out of town to work, the report found. Gorton said Planning Commission members will be providing direction to Maxwell and Popper over the next few months, gearing for completion of the new town plan.

OF MANCHESTER CALDOR SHOPPING PLAZA OPEN MON.-FRI. 10-9 SAT. 10-6 SUN. 12-5

ATTENTION MEN

IT'S MEN'S NIGHT AT HARVEY'S! THURS., DEC. 17th

GIFT CHECK LIST

- SWEATERS
- SLACKS
- BLOUSES
- PANT SUITS
- DRESSES
- SKIRTS
- ROBES
- COATS

•Coffee Served •Free Gift Wrapping •Exchanges after Christmas •Personal and Courteous Attention •1/3 to 1/2 OFF Regular Retail

Always First Quality Famous Brands - Labels Not Removed

MEN'S NIGHT MEN'S NIGHT MEN'S NIGHT

Astro-graph

December 17, 1981

You may have some interesting challenges to contend with this coming year, but you'll be more than a match for anything that confronts you. They might slow you down a little, but they won't stop you.

SAGITTARIUS (Nov. 23-Dec. 21) You know what needs doing today and you have the capabilities to do it. However, you might do more thinking about it than actually putting forth the effort. Find out more of what lies ahead for you in each of the seasons following your birthday by sending for your copy of Astro-Graph, Mail \$1 for each to Astro-Graph, Box 488, Radio City Station, N.Y. 10101. Be sure to specify birth date.

CAPRICORN (Dec. 22-Jan. 19) Two things could hold you back today: Self-defeating thoughts and trying to do something the identical way it proved unsuccessul previously.

AQUARIUS (Jan. 20-Feb. 18) Don't dig too deeply today into a friend's personal affairs. You might uncover something you won't be able to resist telling others about.

PISCES (Feb. 19-March 20) Important decisions which personally affect you should be made by you today, not by others. Though their intentions may be good, their judgment could be faulty.

ARIES (March 21-April 19) Beware of making judgments concerning any and every one you have all the facts. Decisions based upon shifty information

Motley's Crew — Templeton & Forman



Winnie Winkie — Henry Raduta and J.K.S.



Levy's Law — James Schumeister



Crossword

ANSWER TO PREVIOUS PUZZLE

1	Public	46	Author
2	Highest	48	Taka
3	12	51	Seas
4	18	55	Tacked
5	19	58	Accommodation
6	20	59	Ricky
7	21	60	Mountain
8	22	61	Spanish
9	23	62	American
10	24	63	Swiss
11	25	64	Swiss
12	26	65	Swiss
13	27	66	Swiss
14	28	67	Swiss
15	29	68	Swiss
16	30	69	Swiss
17	31	70	Swiss
18	32	71	Swiss
19	33	72	Swiss
20	34	73	Swiss
21	35	74	Swiss
22	36	75	Swiss
23	37	76	Swiss
24	38	77	Swiss
25	39	78	Swiss
26	40	79	Swiss
27	41	80	Swiss
28	42	81	Swiss
29	43	82	Swiss
30	44	83	Swiss
31	45	84	Swiss
32	46	85	Swiss
33	47	86	Swiss
34	48	87	Swiss
35	49	88	Swiss
36	50	89	Swiss
37	51	90	Swiss
38	52	91	Swiss
39	53	92	Swiss
40	54	93	Swiss
41	55	94	Swiss
42	56	95	Swiss
43	57	96	Swiss
44	58	97	Swiss
45	59	98	Swiss
46	60	99	Swiss
47	61	100	Swiss

CELEBRITY CIPHER

LMRLZM XMZM AM O ZRRB ZOBM
YCA O CNJHR O JMDMW WMGOZE
XYRNFYX GHRNX HMOJF YOI
FWGJCCGNFYXW.M — AGWOMZ
YMAOJFKGE

PREVIOUS SOLUTION: "Some people have an instinctive grasp of power. Winston Churchill didn't need zero-based budgeting." — Adlai Stevenson

Lovely Accessory to the holidays...

It looks like satin finish pewter, but it's the finest quality stainless steel, great to use and lovely to look at... now at a remarkable price.

Minuet	\$59.
50 piece set reg. 89.95	
Stockbridge	59.
50 piece set reg. 89.95	
Liberty Bell	189.
50 piece set reg. 250.00	
Set of 6 pistol grip	
Steak Knives Reg. 24.95	19.95
Lobster Set	
6 folks, 2 crackers	
Reg. 24.95	19.95

Great for giving... Great for owning

Marlborough Country Barn

NORTH MAIN ST., RT. 2 EXIT 12 OR 13, MARLBOROUGH

Christmas Hours: Beginning Dec. 8, Open Tuesdays, Wednesdays, Thursdays and Fridays 10:30 p.m. - Sat. 10:30-5:30, Sun. 1-5:30. Open Monday only on Dec. 21 - 10:30

Celebrate Christmas with Heritage

For the second consecutive year, we of the Heritage Savings family invite you to take a few minutes out from shopping Thursday night to join us for a program of Christmas music at our main office. The program will be presented by The Martha White Singers, Manchester's 30 member choral group that has won wide recognition throughout the region. We'll have coffee, cocoa and cookies for everyone. Won't you join us Thursday? We'll be in the courtyard of our office at 1007 Main Street from 7:00 till 8:00. We look forward to sharing the spirit of the holiday season with all of our friends.

Heritage Savings & Loan Association - Since 1891

1007 Main Street

Bridge

Timeless play

Harvey's

Attention Men

Gift Check List

- SWEATERS
- SLACKS
- BLOUSES
- PANT SUITS
- DRESSES
- SKIRTS
- ROBES
- COATS

•Coffee Served •Free Gift Wrapping •Exchanges after Christmas •Personal and Courteous Attention •1/3 to 1/2 OFF Regular Retail

Always First Quality Famous Brands - Labels Not Removed

MEN'S NIGHT MEN'S NIGHT MEN'S NIGHT

Astro-graph

Motley's Crew — Templeton & Forman

Winnie Winkie — Henry Raduta and J.K.S.

Levy's Law — James Schumeister

Captain Easy — Crooks & Lawrence

Alley Oop — Dave Graue

The Born Loser — Art Sansom

Our Boarding House — Carroll & McCormick

Winthrop — Dick Cavalli

Bugs Bunny — Warner Bros.

Frank and Ernest — Bob Thaves

Frank and Ernie's Diner

Kil 'n' Carlyle — Larry Wright

THE HERALD, Wed., Dec. 16, 1981 — 23

16 DEC 16

LEAN & MEATY SAMMY BRAND SMOKED SHOULDERS

69¢ lb.



Pic 'n' Save

725 EAST MIDDLE TPK. — MANCHESTER, CT. (ROUTE 6) OPPOSITE SAINT BARTHOLOMEW CHURCH

Store Hours:
8 am-9 pm Daily
Fri. - 8 am-10 pm
Sun. - 9 am-4 pm

We challenge comparison...

FRESH LEAN WESTERN CORNFED PORK ROAST Full Rib or Loin Half	USDA CHOICE BONELESS SIRLOIN TIP ROAST
\$1.18 lb.	\$1.98 lb.
SWIFTS PREMIUM 10-13 LB. AVG. BUTTERBALL TURKEYS	SWIFTS PREMIUM 16-22 LB. AVG. BUTTERBALL TURKEYS
78¢ lb.	85¢ lb.
USDA CHOICE SIRLOIN TIP STEAK Boneless	USDA CHOICE - CUT FROM ROUND CUBE STEAK
\$2.28 lb.	\$2.68 lb.
TENDER, JUICY - BONELESS CHICKEN BREAST	OUR BEST CENTER CUT RIB PORK CHOPS
\$2.08 lb.	\$1.58 lb.
ASSORTED PACK (3 CENTERS, 6 ENDS) PORK CHOPS	LEAN & MEATY COUNTRY STYLE PORK RIBS
\$1.28 lb.	\$1.38 lb.
FRESH BONELESS PORK LOIN ROAST	FRESH PORK SHOULDER PICNIC
\$1.78 lb.	98¢ lb.

deli savings

SMITHFIELD DOMESTIC COOKED HAM	\$1.99
CARANDO GENOA SALAMI	\$3.28
MUCKES PRESSED DELITE	\$2.38
RUSSELLS LEBANON BOLOGNA	\$2.88
GEM POLISH LOAF	\$1.48
FRESH FROZEN 26-30 CT. (5-LB. LOT ONLY) COCKTAIL SHRIMP	\$5.99
IMPORTED SWISS CHEESE	\$2.78

ORANGE JUICE 6 OZ. CAN	49¢	ALL FLAVORS HOODS ICE CREAM 1/2 GAL.	\$1.59
Land O'Lakes MARGARINE 6 OZ. CAN	49¢	Breakstone DIPS 8 OZ. CAN	59¢
OLD FASHIONED ICE CREAM PEPPERMINT STICK CHICKEN, TURKEY OR SALISBURY - HALF GALLON	\$1.59	FLEISCHMANN'S SOFT MARGARINE MOSER FARMS ORANGE JUICE SWEET LIFE	\$1.19
MORTON DINNERS SWEET LIFE GREEN BEANS, PEAS & CARROTS - 11 OZ. PKG.	69¢	SOUR CREAM TEMPETE CREAM CHEESE	69¢
POLY-BAG VEGETABLES CHEF BOY AR DEE CHEESE, SAUSAGE OR PEPPERONI	89¢		79¢
ENGLISH MUFFIN PIZZAS	99¢		
fresh produce		GRAPEFRUIT 5 lb. bag	\$1.19
Idaho Red or White POTATOES	95¢	FIRM RIPE LARGE TOMATOES	49¢ lb.

COUPON

With This Coupon and a Single Prior Purchase of \$10.00 or More

Any Size FRESH EGGS 1 DOZEN

25¢ OFF

Limit One Per Family Valid thru Sat., Dec. 19 At Pic 'n' Save

COUPON

With This Coupon and a Single Prior Purchase of \$10.00 or More

Duncan Hines CAKE MIXES ALL VARIETIES 18.5 oz. pkg.

39¢

Limit One Per Family Valid thru Sat., Dec. 19 At Pic 'n' Save

COUPON

With This Coupon and a Single Prior Purchase of \$10.00 or More

Sweet Life ICE CREAM ALL FLAVORS 1/2 gal.

79¢

Limit One Per Family Valid thru Sat., Dec. 19 At Pic 'n' Save

COUPON

With This Coupon and a Single Prior Purchase of \$10.00 or More

Moser Farms ORANGE JUICE 1/2 gal.

79¢

Limit One Per Family Valid thru Sat., Dec. 19 At Pic 'n' Save

BUSINESS / Classified

Economy Electric growing Manchester firm needs more space

By Lisa Zowada Herald Reporter

From the outside it appears to be what very little of it actually is - a lighting showroom.

The words "electric supply" hang on the simple brick exterior. Rows of lights, some hanging from the ceiling, others standing on the floor, can be seen through the glass doors.

It's easy to be fooled and those who have must have been surprised at the news that Economy Electric Supply Inc. wants to buy 16 acres of privately- and town-owned land and construct a new 90,000-square-foot showroom-warehouse-office at a cost of \$4.5 million.

But the retail showroom generates only about 5 percent of all the business the Oakland Street store does. And to understand Economy's success one has to look at the rest of its business which includes a huge inventory, wholesale sales to contractors and bidding on and often receiving, major commercial and industrial electrical jobs across the country and around the world.

In the 44 years Economy has been in business it has grown into one of the single largest distribution centers in the country, according to its president, Robert Weinberg. An inventory worth \$5.5 million is housed in nearly 100,000 square feet in various locations in Manchester, including the facility at Oakland Street. The business continues to blossom with a sales growth rate of 30 percent annually.

Weinberg, says the company is eager to move into the proposed new facility off Tolland Turnpike so it can consolidate its inventory and have more breathing room.

Economy recently had to set up 7,000 square feet of temporary office space on Oakland Street and Weinberg complains that there isn't enough loading room at the present location to handle the 300 to 400 orders that go out every day to locations as far north as Maine.

Despite the lack of space and the undesirable storage conditions, Economy is obviously able to function quite effectively.

It opened two new locations this summer in Bristol and Groton. It is almost always a bidder in major electrical projects in Northern New England and has done work on sports arenas, office, residential, commercial and industrial buildings and Millstone nuclear power plants II and III.

There's also an "Economy" label on electrical work that has been done in Saudi Arabia and Araba. Ask Weinberg exactly what is responsible for Economy's growth and he'll quickly answer that it has been the company's sensitivity to the needs of the consumer and the company's additions and modifications which has brought success.

"We have listened to what people want and we have grown with them," says Weinberg. "They in turn take advantage of what we offer."

When Economy moved to its present location five and a half years ago it was little more than a lighting showroom, employing about 70 people.

Now the company employs 165 people and has expanded its personnel to include designers, estimators, a team of lighting experts, as well as expanding their product line to include saunas, appliances, heating and air conditioning and gas and oil furnaces.

"Part of the secret to success, Weinberg says, "is our ability to offer a broad range of general services from a central source."

Weinberg is also quick to commend what he calls "an outstanding group" of employees on all levels of the operation.

All of these things, Weinberg says, combine to give Economy "capabilities far beyond what most people realize about the organization."

"Our company can address a broad spectrum of needs that any given customer may have," he adds. Economy's inventory now includes over 40,000 different items and all 10 major lighting lines, says Weinberg.

The business, which began in Hartford, moved to Manchester, to a store on Oak Street, 25 years ago. Weinberg took over the company from his father 16 years ago. And although the business is nearly half a century old, success has been long in coming.

When Weinberg became owner, all the business Economy had was readily being handled by his father and one secretary.

Now, 16 years later, Weinberg, in one day does, as much business as his father used to do in an entire year.

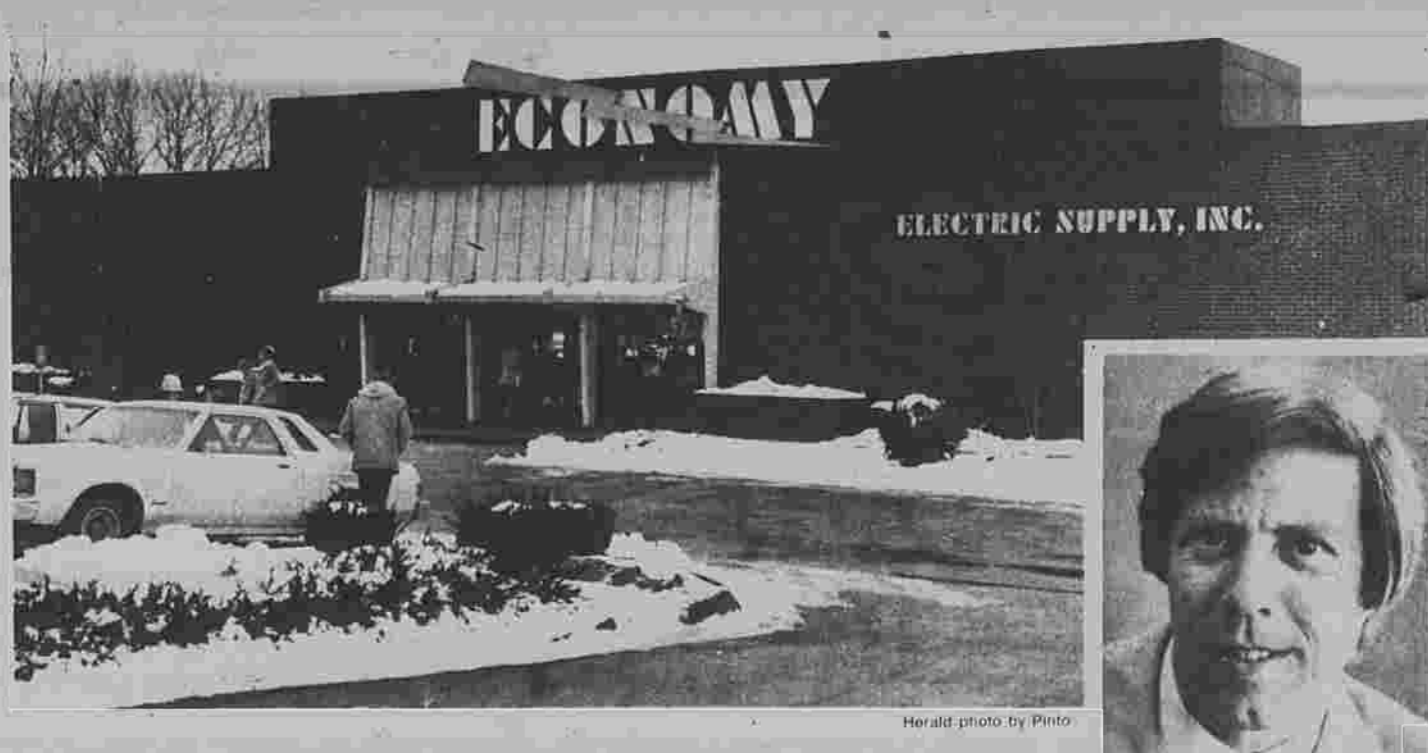
Despite these rosy figures Economy has suffered some of the slumping construction market. But even with construction plunging to new lows Economy's sales kept it head well above water.

From 1979 to 1980 Economy enjoyed a sales growth rate of 50 percent. With the construction crisis the rate has dropped to 28 percent, but as Weinberg says, that's still not a figure to complain about.

"And besides," he adds, "the 50 percent rate would have been pretty hard to maintain."

With sales this year totalling \$26 million a year, Weinberg says he's more concerned with what the construction slump is doing to the livelihood of Economy's contractor customers, and not so much with what it's doing to the company.

"Whatever happens," says



In just five and a half years, Economy Electric Supply Inc. has outgrown Oakland Street facility, shown. But the crowded conditions are a sign of the company's continuing success, and its president, Robert Weinberg (inset) isn't complaining.

Weinberg, "I'm confident we'll continue to grow geographically."

In fact, Weinberg says his company is working right now on a deal that would lead to the opening of the first out-of-state store in Massachusetts. The company is presently making plans to purchase an existing distribution center in that state.

"We also have a number of other plans for New England," said Weinberg, but wouldn't say exactly what they included.

"A good general never shares his strategy," he adds.

Though Weinberg now lives in West Hartford he still considers himself a part of the Manchester community he lived in for 14 years. Before Economy's growing success began demanding more of his time, Weinberg served on the Chamber of Commerce Board of Directors, and was a member of the Economic Development Commission.

The past Manchester resident has some thoughts on what Economy's role success means to the community and its people.

"We give people, first, an exciting place to shop for lighting, appliances, other decorative accessories, dryers, central vacuum cleaning systems, you name it," he says.

"We also provide, as we grow, a large variety of employment opportunities," he says, adding that the company hopes to hire more people when the new facility is built. If the plans are approved by the town, Economy could move into its new home by March 1983.

Economy's plans for the new facility also include possible expansion in the future to a 224,000 square foot building.

And with Weinberg at the helm, it may not be long before that facility, too, begins to feel a bit cramped.

"The entire management here is dedicated to building a larger and more successful organization," says Weinberg. "There is no limitation to our growth."

Public records

- Quitclaim deeds**
Susan Donahue to Gerald P. Guay and Susan M. Donahue, property at 4 Little St.
- John W. Gilnaek to Claudine J. Walker**, property at 405 Backstreet St.
- Harold W. Garrity and Arlyne Garrity to Joseph L. Swanson Jr., Inc.**, parcel of land at Lot 32 of Weldon Estates.
- Federal tax lien**
Internal Revenue Service against Garden Grove Caterers Inc., Keeney Street \$12,017.
- Internal Revenue Service against Norman S. Hohenthal Co. Inc.**, 141 Center St., \$3,342.
- Internal Revenue Service against Donna Toce**, 87-A Rachel Road, \$7,984.
- Lisa pendes**
Savings Bank of Manchester against William E. Saglio and Savin Zaverella, trustee, property at 569 Hilliard St.
- Declaration of trust**
Giulio Verro and Olga Verro, trustees of Honeway Associates, 29 Ridge St., in trust for Lia Zygmunt and Piero Verro.
- Certificate of attachment**
Westinghouse Electric Corporation against Patricia A. Hampson, property at 58 Margaret Road.
- Administrator's deed**
Alan D. Thomas, ad-
- Beatrice G. E. Belanger**, parcel of land Thomas estate, to James at 46 Courtland St., \$35,000.

REWARD

Please return our female German Shepherd by Christmas. Answers to "Greta," Black and tan, white chest, no collar. BEAUTIFUL. Lost Nov. 4th. Love to have her back home! Please find in your heart to return to heart-broken family.

649-2732

Success in business

often depends in part, on good recordkeeping for management information and tax purposes, and on management's ability to use the data.

For professional guidance in accounting, tax, and general management matters, contact:

NORMAN C. HOLCOMB
Certified Public Accountant
649-6498

A member of the Connecticut Society of Certified Public Accountants

Dividend declared

BRIDGEPORT - Directors of First Connecticut Small Business Investment Co., have declared a regular quarterly cash dividend of 25 cents a share, payable Jan. 29, 1982 to stockholders of record Dec. 30.

A public company, First Connecticut is listed on the American Stock Exchange.

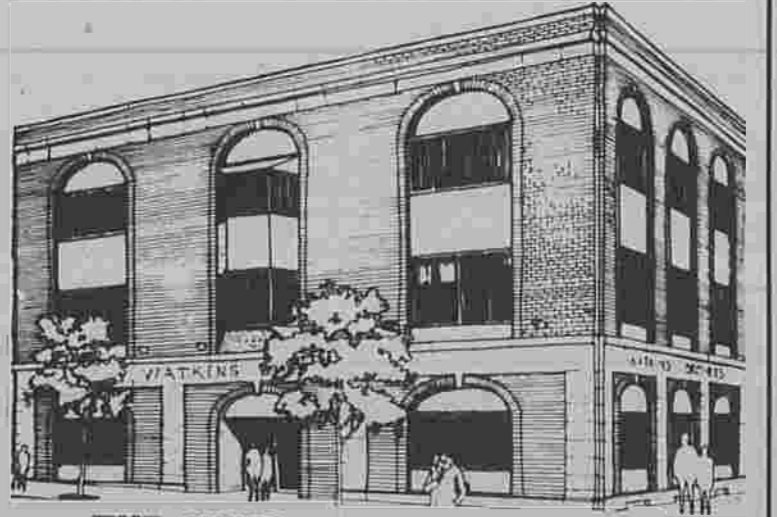
Look For The "BINGO BUGS"

"Bingo Bugs" will be appearing daily in The Herald. Just look for the "bug" with a number in each ad; if you have it, mark it off with an X on your "Bingo Card." Mark off all numbers on your card and you have won our Weekly \$100 Award!

IF YOU ARE A WINNER
If you have a winning Bingo Card on which all 24 numbers have been marked with the total of all the numbers published during the week, call The Herald the next publishing day between 9 and 10 A.M. to verify your card. In the event of a tie, only those winners calling between 9 and 10 A.M. the following publication day will be eligible for the prize.

ALL THE DETAILS WILL BE IN THE HERALD'S FULL COLOR PAGE EVERY THURSDAY!

CHECK CLASSIFIED PAGES DAILY FOR "BINGO BUGS" INSTRUCTIONS



THE WATKINS CONDOMINIUM

The former Watkins Furniture Store Building is scheduled to be renovated into a prime office condominium. This historic downtown Manchester landmark can be purchased in condominium unit increments from 760 square feet. An owner will not only save money in rent but qualify for all owner benefits and other incentives as a result of The Economic Recovery Tax Act of 1981. For a detailed brochure please call J.D. Real Estate Company at 646-1980. This is an excellent opportunity for you and your business.

J.D. REAL ESTATE COMPANY
Real Estate & Investment Brokers



Join your friends and neighbors in support of Manchester Memorial Hospital's \$3,000,000 Community Fund drive.

Please send your contribution to Manchester Memorial Hospital Building Fund P.O. Box 1409 Manchester, Conn. 06040 646-7086

16

DEC

16

